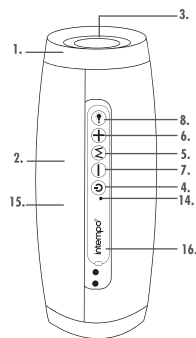
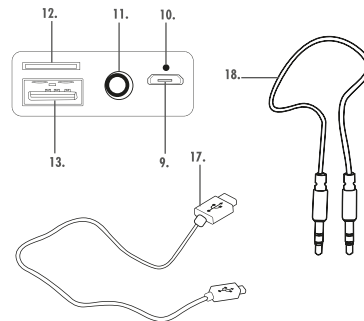


Description of Parts



1. WDS43 Galaxy Speaker main unit
2. Speaker
3. Passive radiator
4. Power/Play/Pause button (⏻)
5. Mode button (M)
6. Skip/Volume + button (+)
7. Skip/Volume - Button (-)
8. LED light button (💡)



9. 5 V charging port
10. LED indicator light
11. Aux. input port
12. TF/SD card slot
13. USB port
14. Hands-free microphone
15. Colour changing LED lights
16. Port cover
17. USB charging cable
18. Line-in aux. cable

WDS43 GALAXY SPEAKER INSTRUCTION MANUAL

used whilst charging, as this could reduce the life of the battery.

Battery Safety

The supply terminals are not to be short-circuited.

In the event of a battery and cell leaking, do not allow the liquid to come in contact with the skin or eyes. If contact has been made, wash the affected area with copious amounts of water and seek medical advice. Secondary cells and batteries need to be charged before use. After extended periods of storage, it may be necessary to charge and discharge the cells or batteries several times to obtain maximum performance. Keep batteries out of the reach of children. Do not crush, puncture, dismantle or otherwise damage batteries. Do not store above 60 °C. Avoid storage in direct sunlight.

Do not dispose of exhausted batteries in household waste. Do not expose the batteries to heat or fire as they may explode.

Once the batteries have been exhausted, dispose of the product at a local recycling station. Contact the local government offices for further details. This product is fitted with a 1200 mAh Lithium-ion rechargeable battery (non-removable).

Declaration of Conformity

UP Global Sourcing UK Ltd. hereby declare that this product is in compliance with the essential requirements and other provisions of directive 2014/53/EU.

The declaration of conformity may be consulted at UP Global Sourcing UK Ltd., Victoria Street, Manchester OL9 0DD. UK. or online at <http://www.intempo.co.uk/declaration-letters.html>. Model No.: EE4878

Care and Maintenance

Wipe the speaker with a soft, lint-free cloth.

DO NOT:

Use any abrasive cleaning solvents to clean the speaker.

Expose the speaker to extremely high or low temperatures.

Drop the speaker.

Attempt to disassemble the speaker.

Dispose of the speaker in a fire as it will result in an explosion.

Instructions for Use

Charging the Battery

The speaker is fitted with a 3.7 V 1200 mAh Lithium-ion rechargeable battery (non-removable). It is recommended that the battery is fully charged before first use; this will take approx. 3–4 hours.

Connect the micro USB end of the USB charging cable into the 5 V charging port on the

Please retain instructions for future reference.

Safety Instructions

When using electrical products, basic safety precautions should always be followed. Keep the product and its accessories out of the reach of children.

Keep small parts away from children as these may present a choking hazard.

Children under 8 years should be supervised to ensure that they do not play with the product. This product is not a toy.

This product contains no user serviceable parts. If the product and any of its accessories are malfunctioning or damaged; the unit should be recycled.

Keep the product and its accessories away from heat sources, direct sunlight, humidity, water and any other liquid, or sharp edges that could cause damage.

Ensure the speaker is well-ventilated.

Do not leave any objects susceptible to magnetism (cash cards etc.) near the product. Do not operate the product with wet hands. Do not operate the product if it has been exposed to water, moisture or any other liquid, to prevent against electric shock, explosion and/or injury to yourself and damage to the product.

Do not use the product for anything other than its intended use.

Do not use any accessories other than those supplied.

Do not put objects into any of the openings. This product is intended for domestic use only. It should not be used for commercial purposes.

To prevent possible hearing damage, do not listen at high volume levels for long periods of time – this may also damage the product.

NOTE: It is advised that the product is not

CA / CZ2022 / 000000

©Intempo trademark. All rights reserved.

www.intempo.co.uk

Made in China.

Germany. 51149 Köln.

UK. Manchester OL9 0DD.

UP Global Sourcing UK Ltd.

Manufactured by



previous track by pressing '←'.

Cycle between modes by pressing 'M' until the desired operation is selected.

Press and hold '⏻' to turn the speaker off.

Using the Colour Changing LED Lights

The colour changing LED lights will automatically activate when the speaker is turned on and can be controlled using '💡'. Press '💡' to cycle through the various light mode options. The last colour option will switch off the LED lights.

Modes

The speaker must be turned on before using any of the following modes.

Bluetooth Mode

STEP 1: Once the speaker has been turned on, the LED indicator light will flash blue in quick bursts to signal that the speaker is ready to be

paired with a Bluetooth compatible device.

STEP 2: Search for the speaker using a Bluetooth compatible device. Select 'EE4878' to connect and pair. Once a connection has been made, the LED indicator light will remain blue.

STEP 3: To unpair or remove a Bluetooth compatible device from the speaker, turn off the Bluetooth function on the compatible device. The speaker can now be paired with a new compatible device.

NOTE: Once connected, sound can be controlled using either the speaker or the relevant controls on the Bluetooth compatible device.

Making Phone Calls via a Bluetooth Compatible Device

Once the Bluetooth compatible device has been paired with the speaker, phone calls can be made.

STEP 1: Using the Bluetooth compatible

device, dial the number to be called and select the Bluetooth/Hands-free option. The speaker and its built-in microphone will now act as a hands-free device.

STEP 2: To connect or answer a call using the speaker, press '⏻' once.

STEP 3: To reject an incoming call, press and hold '⏻' for 2 seconds.

NOTE: The volume of the phone call can be controlled using the Bluetooth compatible device.

Aux. Mode

Connect one end of the line-in Aux. cable to the Aux. input port on the speaker and the other end to an MP3 player or other compatible audio source.

The speaker will automatically switch to Aux. mode once the line-in Aux. cable has been inserted. If this does not occur, press 'M' to switch to Aux. mode manually.

NOTE: Once connected, sound can be controlled using the relevant controls on the compatible audio source. The speaker cannot be used to skip tracks during Aux. mode.

TF/SD Card/USB Mode

STEP 1: To use TF/SD mode, insert a TF/SD card (not included) into the TF/SD card slot. The speaker will automatically change to TF/SD mode.

STEP 2: To use USB mode, insert a compatible USB drive into the USB port. The speaker will automatically change to USB mode.

STEP 3: If the speaker does not automatically change to TF/SD or USB mode, press 'M' until the desired operation is

selected.

NOTE: Once connected, sound can be controlled using the speaker.

No USB drive should be inserted whilst using TF/SD mode or vice versa, as this could interfere with playback.

The speaker will only recognise MP3 audio files; if other files are present on the TF/SD card or USB drive, this may prevent the speaker from playing.

Troubleshooting

The speaker has no power.

The speaker has run out of charge. Charge the speaker following the instructions in the section entitled 'Charging the Battery'.

The speaker has no sound.

The volume level is set too low. Check that the volume level is set at an audible level and adjust accordingly.

The speaker is not paired with a Bluetooth

compatible device. Follow the instructions in the section entitled 'Bluetooth Mode'.

The speaker is not connected to a compatible audio source. Follow the instructions in the section entitled 'Aux. Mode'.

Unable to pair a Bluetooth device with the speaker.

The Bluetooth device is not compatible with the speaker. Check that the Bluetooth device is compatible with the speaker and that the Bluetooth function is switched on.

The charge of the speaker depletes quickly.

The volume level is set too high. Excessive use of the speaker at high volumes will drain the battery quickly. Charge the speaker following the instructions in the section entitled 'Charging the Battery' and listen at a lower volume for better results.

The battery may be reaching the end of its service life and the unit will need to be disposed of. See the section entitled 'Battery Safety'.

Specifications

Product code: EE4878

Bluetooth version: 5.3

Wireless range: Up to 25 m*

Speaker output: 2 x 5 W

Input: 5 V 

Working voltage: 3.7 V

Rechargeable battery: 1200 mAh

Operating frequency: 2.4 GHz

MAX RF output: <6 dBm

*Effective range may be reduced due to the presence of obstacles between connected devices.